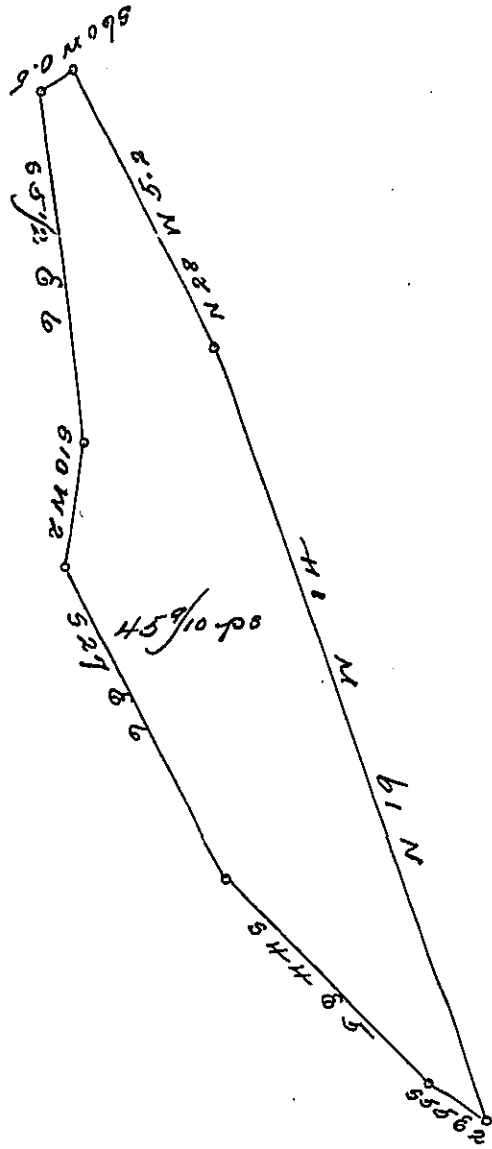


York County Shore

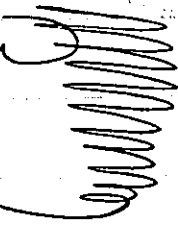


Lancaster County Shore

A Draught of Cabin Branch Island, Situate in the River Susquehanna, in  
 Manor Township in the County of Lancaster, Opposite to — Wislers Island  
 Containing fortyfive perches and nine tenths Strict measure. Surveyed in  
 pursuance of a Warrant dated the 28th day of May A. D. 1812 granted to  
 John Wisler and Jacob Stock Junior.

Pr. Jacob Hirstman D. J.

To Jacob Spangler Esq  
 Surveyor General



IN TESTIMONY that the above is a copy of the original remaining on file in  
 the Department of Internal Affairs of Pennsylvania, made  
 conformably to an Act of Assembly approved the 16th day of  
 February, 1833, I have hereunto set my Hand and caused  
 the Seal of said Department to be affixed at Harrisburg,  
 this first day of August, 1899.

*James W. Patta*  
 Secretary of Internal Affairs.